

Maeve K at 6335 27 Ave SW

BED	BATH	SQ FT	HOME STYLE
3+	2.5	2328	FRONT ATTACHED GARAGE HOME

GARAGE TYPE

DOUBLE ATTACHED



COMMUNITY

perch
AT MATTSON

SHOWHOME
ADDRESS

744 Mattson Dr

SHOWHOME
HOURS

Monday - Thursday
from 3 - 8PM
Weekend and
Holidays
from 12 - 5PM

CONTACT

Brian Tate
587.801.7285

BLOCK: 2 LOT: 11

STAGE: 1 JOB: PER-0-035632

Model Features

- Built with a main floor bedroom and half bathroom, this spacious house comes with a kitchen at the back with 41" soft close upper cabinets and a chimney hood fan, living room, dinette, a corner pantry and walk-through mud room.
- No neighbours at the back! This house backs the green space!

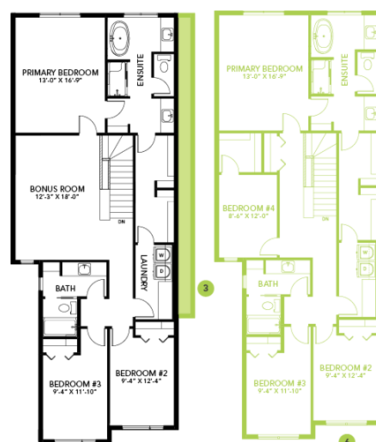
- Every Bedrock Home comes complete with a modern smart home technology system (Smart Home Hub), Ecobee thermostat, Ring video doorbell & Weiser Halo Wi-Fi Smart keyless lock with touch screen.
- Side entry is added for a future legal suite, the basement ceilings are upgraded to 9'
- Spindle railing on the stairs and upper hall to create an open feel from main floor to upper level.
- The upper floor comes with a massive central bonus room with a window
- Built with a 5-piece ensuite with upgraded stand-up shower, dual sinks and a soaker tub!
- Master bedroom comes with a huge his and her walk-through closet connected with a walk-through laundry room.
- Double compartment stainless steel under mount kitchen sink, complete with a chrome finish faucet with pull down sprayer, and 1.5gpm aerator.
- All Bedrock homes include a complete appliance package that includes: Stainless Steel kitchen appliances including a 28 cu. Ft. French door fridge with bottom pull out freezer and ice machine, a 5 burner range and a built-in dishwasher.
- 50" Linear Ortech LED electric fireplace
- Energy efficient features include dual pane, Low-E, argon gas filled, Energy Star rated windows, heat recovery ventilator, 96.5% efficient and direct vented furnace, 80gal hot water tank and Bedrock's "Hotbox" system.
- Quartz counters in the Kitchen and all Bathrooms were upgraded
- Luxury Vinyl Plank flooring throughout the main floor and all "wet" areas
- Advanced wear and stain protection carpet w/ 35 oz. weight and 8 lbs. under pad
- Painted basement floor and the removable 5' x 2' dual slider
- Basement windows are wide enough to fit drywall through for future basement development.
- All ductwork is cleaned prior to moving in

Floor Plans

MAIN FLOOR



SECOND FLOOR



LEGAL BASEMENT SUITE

