

Flora F at 328 29 St SW

BED	BATH	SQ FT	HOME STYLE
4	2.5	1598	LANED HOME



AVAILABLE NOV. 2024

COMMUNITY



CONTACT

Craig Watson
587.805.2131

Showhome Coming Soon

BLOCK: 10

STAGE: 1

LOT: 7

JOB: ALC-0-035592

Model Features

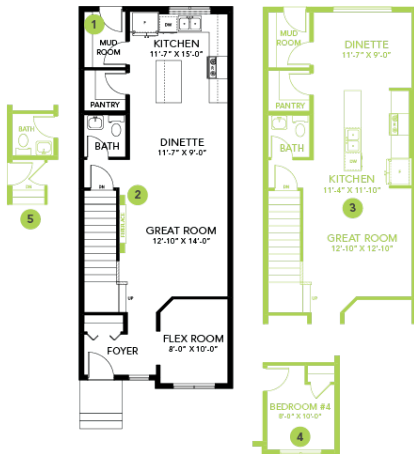
- This Bedrock Home includes a modern smart home technology system (Smart Home Hub), Ecobee thermostat, video doorbell & Weiser Halo Wi-Fi Smart keyless lock with touch screen.
- Home features a main floor 4th bedroom.
- Open kitchen features a large eating bar with cabinets to the ceiling and huge pantry.
- Spindle railing with straight metal spindles on the stairs leading up.
- This home comes complete with a stainless-steel appliance package that includes A 32 cu. Ft. French door fridge with bottom pull out freezer and ice machine, a 5-burner range, an over the range

microwave/ hood fan combination and a built-in dishwasher.

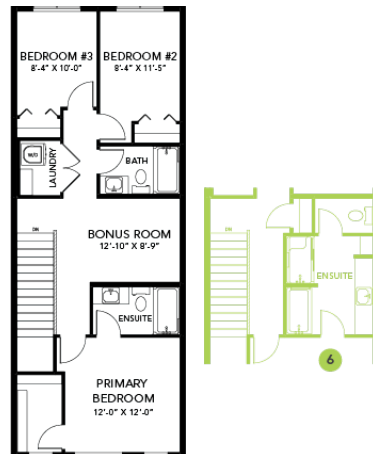
- 50" Linear LED electric fireplace with additional framing to allow for TV mounting above.
- Open kitchen to the rear home the home with a large window for natural lighting, huge Island with an eating bar and a large walk-in pantry.
- Energy efficient features include double pane, Low-E, argon gas filled, Energy Star rated windows, heat recovery ventilator, 96.5% efficient and direct vented furnace, 80gal hot water tank and Bedrock's "Hotbox" system.
- Soft close cabinet doors and drawers throughout and 41' upper cabinets in the kitchen.
- Quartz countertops with undermount sinks in kitchen and bathrooms.
- Luxury Vinyl Plank flooring throughout the main floor and all bathrooms.
- Large second floor laundry room for convenience.

Floor Plans

MAIN FLOOR



SECOND FLOOR



LEGAL BASEMENT SUITE

