

# Athena P at 320 29 St SW

BED	BATH	SQ FT	HOME STYLE	GARAGE TYPE
4	3	1660	LANED HOME	REAR DETACHED



COMMUNITY



CONTACT

Craig Watson  
587.805.2131

Showhome Coming Soon

BLOCK: 10 LOT: 5

STAGE: 1 JOB: ALC-0-035590

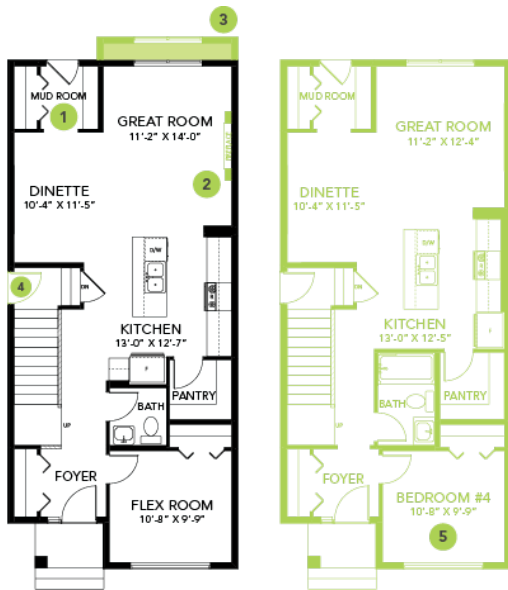
## Model Features

- This Bedrock Home includes a modern smart home technology system (Smart Home Hub), Ecobee thermostat, video doorbell & Weiser Halo Wi-Fi Smart keyless lock with touch screen.
- Open kitchen features a large eating bar, cabinets to the ceiling and huge pantry.
- This home comes complete with a stainless-steel appliance package that includes A 32 cu. Ft. French door fridge with bottom pull out freezer and ice machine, a 5-burner range, an over the range microwave/ hood fan combination and a built-in dishwasher.
- Spindle railing with straight metal spindles on the stairs leading up.

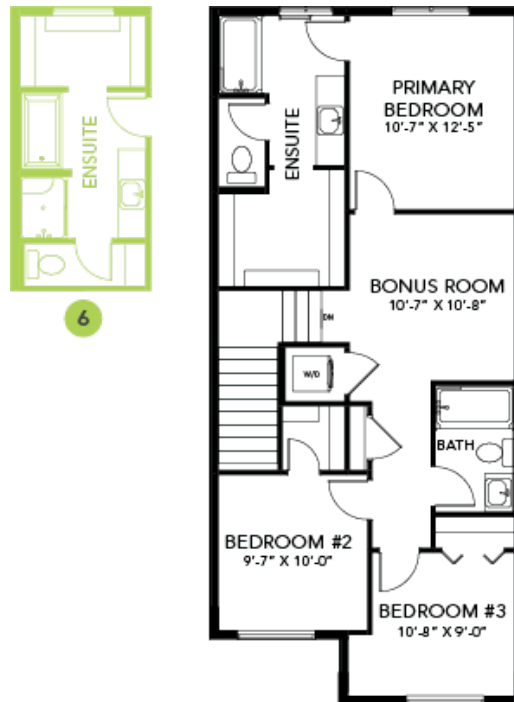
- 50" Linear LED electric fireplace with additional framing to allow for TV mounting above.
- Energy efficient features include double pane, Low-E, argon gas filled, Energy Star rated windows, heat recovery ventilator, 96.5% efficient and direct vented furnace, 80gal hot water tank.
- Soft close cabinet doors and drawers throughout and 41' upper cabinets in the kitchen.
- Home features main floor fourth bedroom with full washroom featuring a walk-in shower.
- Quartz countertops with undermount sinks in kitchen and bathrooms.
- Upstairs bonus room.
- Luxury Vinyl Plank flooring throughout the main floor and all bathrooms.
- Seconds floor laundry with linen closet for convenience.

## Floor Plans

MAIN FLOOR



SECOND FLOOR



LEGAL BASEMENT SUITE

