

Kiera P at 411 29 St SW

BED	BATH	SQ FT	HOME STYLE
3	2.5	1991	FRONT ATTACHED GARAGE HOME

GARAGE TYPE

DOUBLE ATTACHED



QUICK POSSESSION

BLOCK: 11

STAGE: 1

LOT: 31

JOB: ALC-0-035616

COMMUNITY



CONTACT

Craig Watson

587.805.2131

Showhome Coming Soon

Model Features

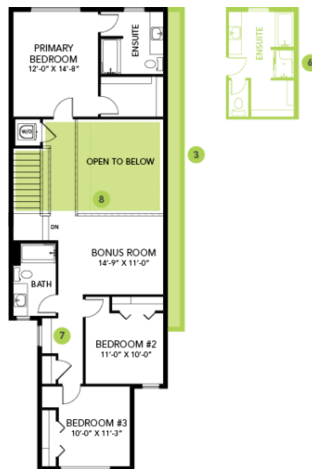
- This Bedrock Homes include a modern smart home technology system (Smart Home Hub), Ecobee thermostat, video doorbell & Weiser Halo Wi-Fi Smart keyless lock with touch screen.
- Separate side entrance and 9' foundation height - perfect for future rental suite.
- Home features beautiful 2 storey living room with bonus room above and catwalk to the primary bedroom.
- Main floor office / flex space perfect for today's work from home / home schooling.
- Open kitchen features a large eating bar with cabinets to the ceiling and pantry.
- Spindle railing on the stairs and upper hall to create an open feel from main floor to upper level.
- This home comes complete with a stainless-steel appliance package that includes A 32 cu. Ft. French door fridge with bottom pull out freezer and ice machine, a 5 burner range, an over the range microwave/ hood fan combination and a built-in dishwasher.
- 50" Linear LED electric fireplace with additional framing to allow for TV mounting above.
- Energy efficient features include double pane, Low-E, argon gas filled, Energy Star rated windows, heat recovery ventilator, 96.5% efficient and direct vented furnace, 80gal hot water tank and Bedrock's "Hotbox" system.
- Soft close cabinet doors and drawers throughout and 41' upper cabinets in the kitchen.
- Quartz counter tops with under mount sinks in kitchen and bathrooms.
- Luxury Vinyl Plank flooring throughout the main floor and all bathrooms.
- Second floor laundry for convenience.

Floor Plans

MAIN FLOOR



SECOND FLOOR



LEGAL BASEMENT SUITE

