

Maeve P at 2851 5 Ave SW

BED	BATH	SQ FT	HOME STYLE
3+	2.5	2328	FRONT ATTACHED GARAGE HOME

GARAGE TYPE

DOUBLE ATTACHED



COMMUNITY



CONTACT

Craig Watson
587.805.2131

Showhome Coming Soon

BLOCK: 10 LOT: 26

STAGE: 1 JOB: ALC-0-035603

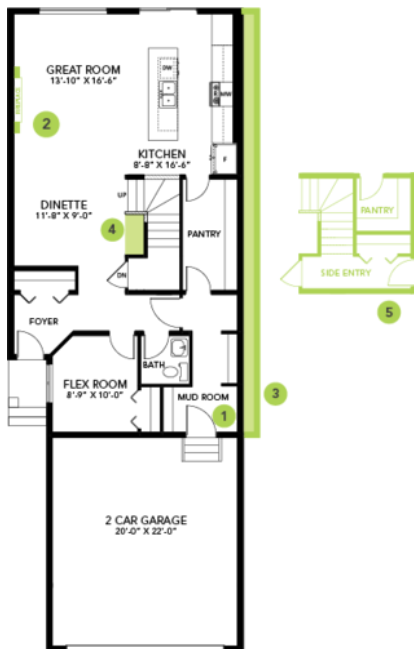
Model Features

- This Bedrock Home includes a modern smart home technology system (Smart Home Hub), Ecobee thermostat, video doorbell & Weiser Halo Wi-Fi Smart keyless lock with touch screen.
- Separate side entrance and 9' foundation height - perfect for future rental suite.
- Spindle railing on the stairs and upper hall to create an open feel from main floor to upper level.

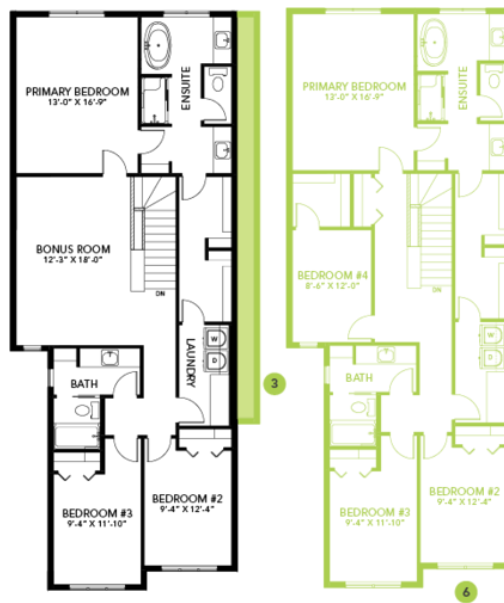
- This home comes complete with a stainless-steel appliance package that includes A 32 cu. Ft. French door fridge with bottom pull out freezer and ice machine, a 5-burner range, an over the range microwave/ hood fan combination and a built-in dishwasher.
- 50" Linear LED electric fireplace with additional framing to allow for TV mounting above.
- Energy efficient features include double pane, Low-E, argon gas filled, Energy Star rated windows, heat recovery ventilator, 96.5% efficient and direct vented furnace, 80gal hot water tank and Bedrock's "Hotbox" system.
- Soft close cabinet doors and drawers throughout and 41' upper cabinets in the kitchen.
- Main floor flex room with closet and window for natural lighting.
- Kitchen includes large eating bar and oversees the great room.
- Quartz countertops with undermount sinks in the kitchen and bathrooms.
- Luxury Vinyl Plank flooring throughout the main floor and all bathrooms
- Huge second floor laundry room with cabinet and countertop.

Floor Plans

MAIN FLOOR



SECOND FLOOR



LEGAL BASEMENT SUITE

