

Taurus Aspen

1557 SQ FT

2414 Kelly Circle SW



- 3 Bedrooms, 2.5 bath
- 9' Ceilings on Main Floor
- Electric linear fireplace in greatroom
- Luxury Vinyl Plank floors in Divine Quest Into the Wild
- Upgrade Stubwalls to Paint Grade railing with metal spindles
- Stainless Steel Appliance Pkg with 17.6cu.ft fridge
- Quartz countertops with Undermount Sink in Caesarstone Ocean Foam 6141
- Upgraded GEM Cabinets in Monaco Linear Ash Thermofoil with Pot and Pan drawer
- Subway tile backsplash in the kitchen
- Heat Recovery Ventilator, high efficiency furnace and hot water tank
- Triple Pane Low E Argon filled Energy Star rated windows

One at Keswick Showhome

2113 Koshal Way, Edmonton

587.521.6580

oneatkeswick@bedrockhomes.ca

Job # KWK 0-034270 Lot 33, Block 12, Plan 172-3548

Notes:

bedrockhomes.ca

VISIT US AT ANY OF OUR SHOWHOMES!

Monday - Thursday 3-8pm, Weekends & Holidays 12-5PM



Taurus Aspen

1557 SQ FT

2414 Kelly Circle SW



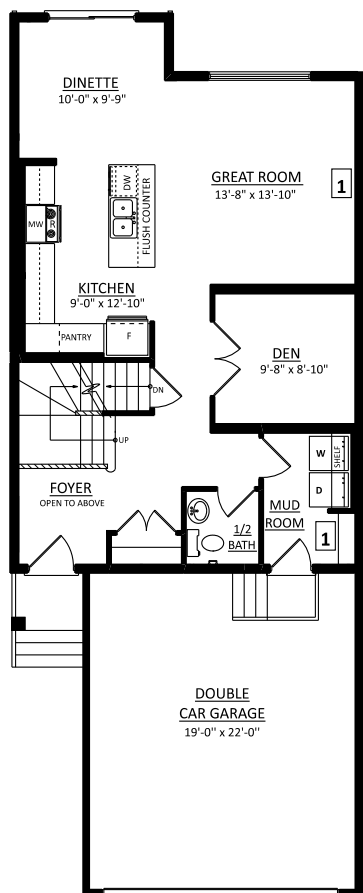
One at Keswick Showhome

2113 Koshal Way, Edmonton

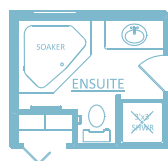
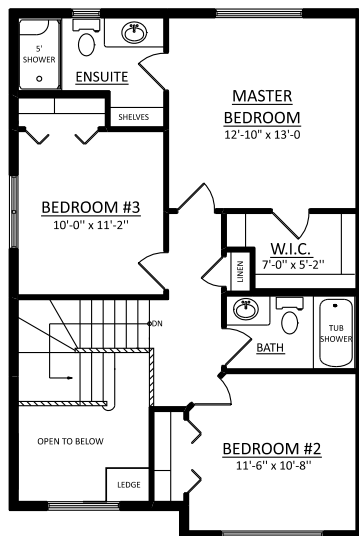
587.521.6580

oneatkeswick@bedrockhomes.ca

Job # KWK 0-034270 Lot 33, Block 12, Plan 172-3548



Main Floor
855 sqft



Second Floor
702 sqft

bedrockhomes.ca

VISIT US AT ANY OF OUR SHOWHOMES!

Monday - Thursday 3-8pm, Weekends & Holidays 12-5PM

