

1368 SQ FT
2832 Koshal Crescent SW



ONE AT KESWICK SHOWHOME

2117 Koshal Way SW, Edmonton
587.521.6580
oneatkeswick@bedrockhomes.ca

Job # KWK-0-033669
Lot 15, Block 10, Plan 152-3091

Over
\$2,600
in Designer
Upgrades

DETAILS

- Amazing location with a west facing backyard looking out onto a field with no rear neighbors and views of the beautiful sunsets over the river
- 3 Bedrooms, 2.5 bath
- Electric linear fireplace in great room
- Luxury vinyl plank floors in Divine Quest North Face
- Upgrade stubwalls to paint grade railing with metal spindles
- Stainlesssteel appliance package with 17.6 cu.ft fridge
- Quartz countertops with undermount sink in HanStone Metropolitan
- GEM Monaco Vanilla Thermofoil Cabinets with pot and pan drawer
- Subway tile backsplash in the kitchen
- Heat Recovery Ventilator, high efficiency furnace, and hot water tank
- Triple Pane Low E Argon filled Energy Star rated windows
- Second floor laundry room



BEDROCK
HOMES

WINDSOR BIRK

1368 SQ FT
2832 Koshal Crescent SW

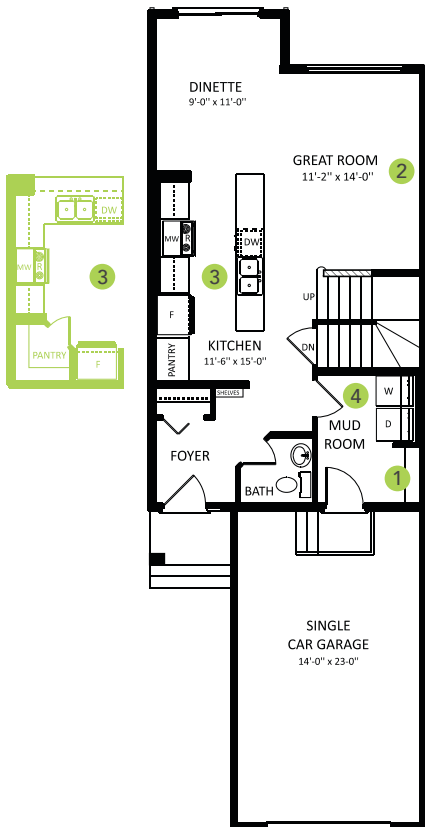


ONE AT KESWICK SHOWHOME

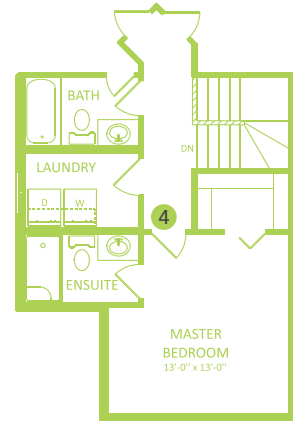
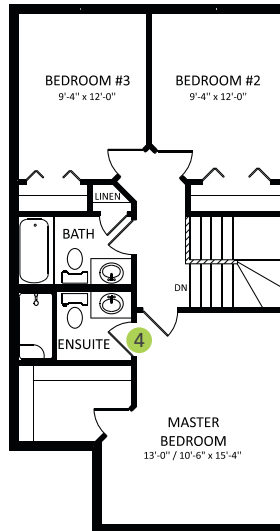
2117 Koshal Way SW, Edmonton
587.521.6580

oneatkeswick@bedrockhomes.ca

Job # KWK-0-033669
Lot 15, Block 10, Plan 152-3091



Main Floor
680 SQ FT



Second Floor
688 SQ FT