

# Flora P at 312 29 St SW

BED	BATH	SQ FT	HOME STYLE
3+	2.5	1598	LANED HOME



AVAILABLE SEP. 2024

COMMUNITY



CONTACT

Craig Watson

587.805.2131

Showhome Coming Soon

BLOCK: 10

---

STAGE: 1

---

LOT: 3

---

JOB: ALC-0-035588

# Model Features

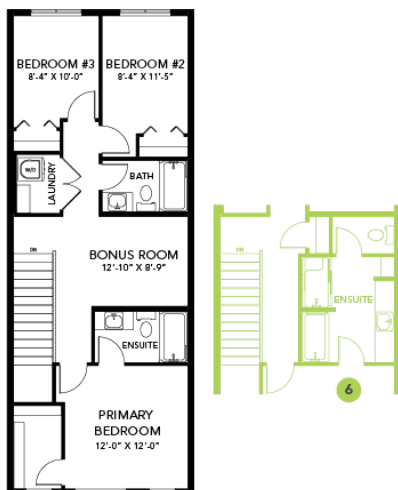
- This Bedrock Homes include a modern smart home technology system (Smart Home Hub), Ecobee thermostat, video doorbell & Weiser Halo Wi-Fi Smart keyless lock with touch screen.
- Main floor office / flex space perfect for today's work from home / home schooling
- Open kitchen to the rear home the home with a large window for natural lighting, huge Island with an eating bar and a large walk-in pantry.
- Spindle railing on the stairs and upper hall to create an open feel from main floor to upper level.
- This home includes a complete appliance package that includes Stainless Steel kitchen appliances including a 32 cu. Ft. French door fridge with bottom pull out freezer and ice machine, a 5 burner range, an over the range microwave/ hood fan combination and a built-in dishwasher.
- 50" Linear LED electric fireplace with additional framing to allow for TV mounting above.
- Energy efficient features include double pane, Low-E, argon gas filled, Energy Star rated windows, heat recovery ventilator, 96.5% efficient and direct vented furnace, 80gal hot water tank.
- Soft close cabinet doors and drawers throughout and 41' upper cabinets in the kitchen.
- Quartz counter tops with under mount sinks in kitchen and bathrooms.
- Luxury Vinyl Plank flooring throughout the main floor and all bathrooms.
- Huge second floor laundry room for convenience.

## Floor Plans

MAIN FLOOR



SECOND FLOOR



LEGAL BASEMENT SUITE

