

THE SEVILLE P

3 BEDS

2.5 BATHS

1990 SQ FT

SINGLE FAMILY HOME



THE SEVILLE P

3 BEDS

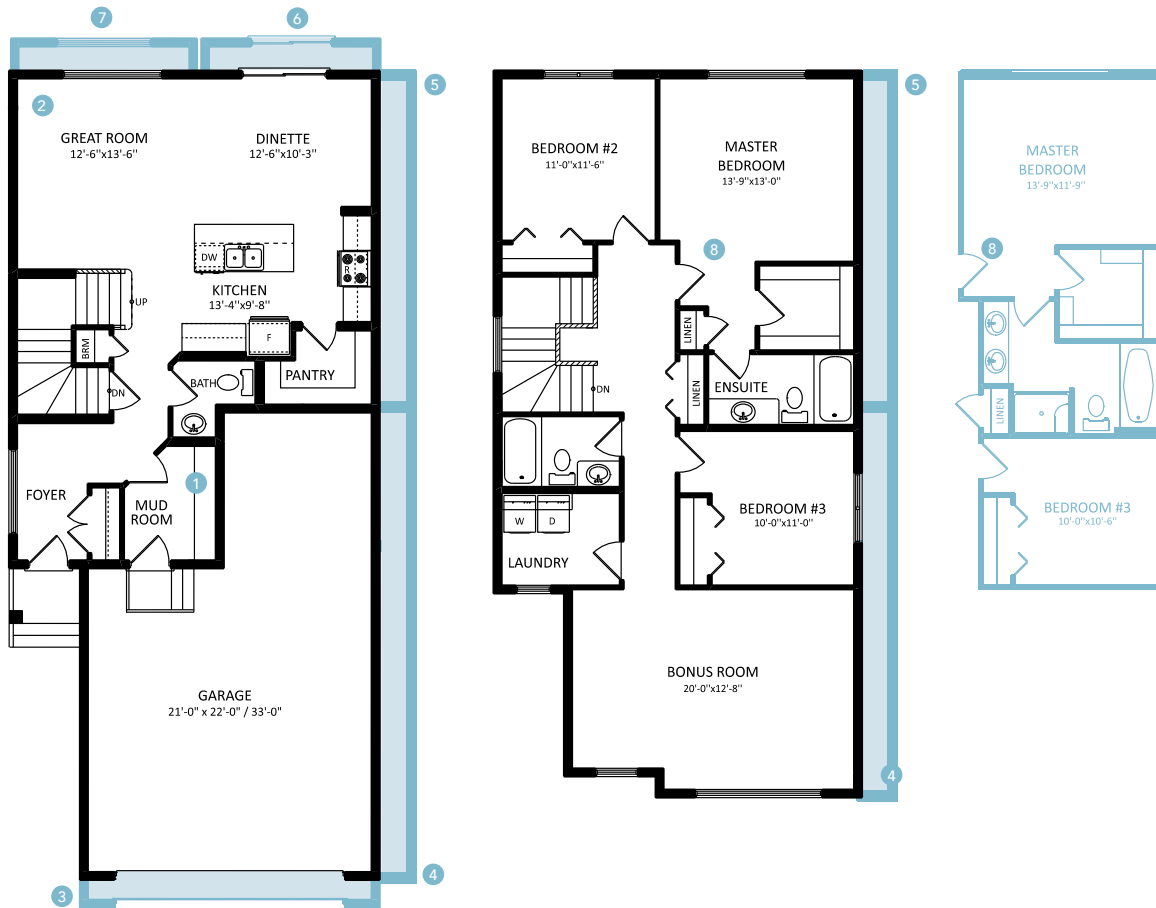
2.5 BATHS

1990 SQ FT

SINGLE FAMILY HOME

MAIN FLOOR 789 SQ FT

SECOND FLOOR 1201 SQ FT



OPTIONS

- 1 BENCH OPTIONS
- 2 FIREPLACE OPTIONS
- 3 LENGTHEN GARAGE BY 2'
- 4 WIDEN GARAGE AND BONUS ROOM BY 2'
- 5 WIDEN WHOLE HOUSE BY 2'
- 6 ADD 2' TO DINETTE
- 7 ADD 2' TO GREAT ROOM
- 8 4-PIECE ENSUITE