

The Kent (Birk)

1352 SQ FT

4405-5A St. NW



- 3 Bedroom 2.5 bath home on a corner lot across from a park
- U shape kitchen with flush countertop eat up bar
- 36" thermofoil cabinets with crown moulding and soffit panel to ceiling with subway tile backsplash
- Kohler Alteo faucets with Bellera kitchen faucet
- Laminate flooring in great room, dinette, kitchen, pantry, foyer and 1/2 bath
- Ceramic Tile in mud room/laundry, ensuite and main bath
- Superior silence shared wall system - no shared studs or floor joists
- Dual Pane Low E Argon filled EnergyStar windows, Heat Recovery Ventilator, high efficiency furnace and hot water tank
- Fence
- Lot size: 308.40 Sq M
- Single car front attached garage (14' x 23') insulated and dry walled

Maple Crest Showhome

4403 + 4407-6 St. NW, Edmonton, AB.

587.521.7744

maplecrestsales@bedrockhomes.ca

Job # MPC-0-033824 Lot 95, Block 11, Plan 152-3661

Notes:

bedrockhomes.ca

VISIT US AT ANY OF OUR SHOWHOMES!

Monday - Thursday 3-8pm, Weekends & Holidays 12-5PM



The Kent (Birk)

1352 SQ FT

4405-5A St. NW



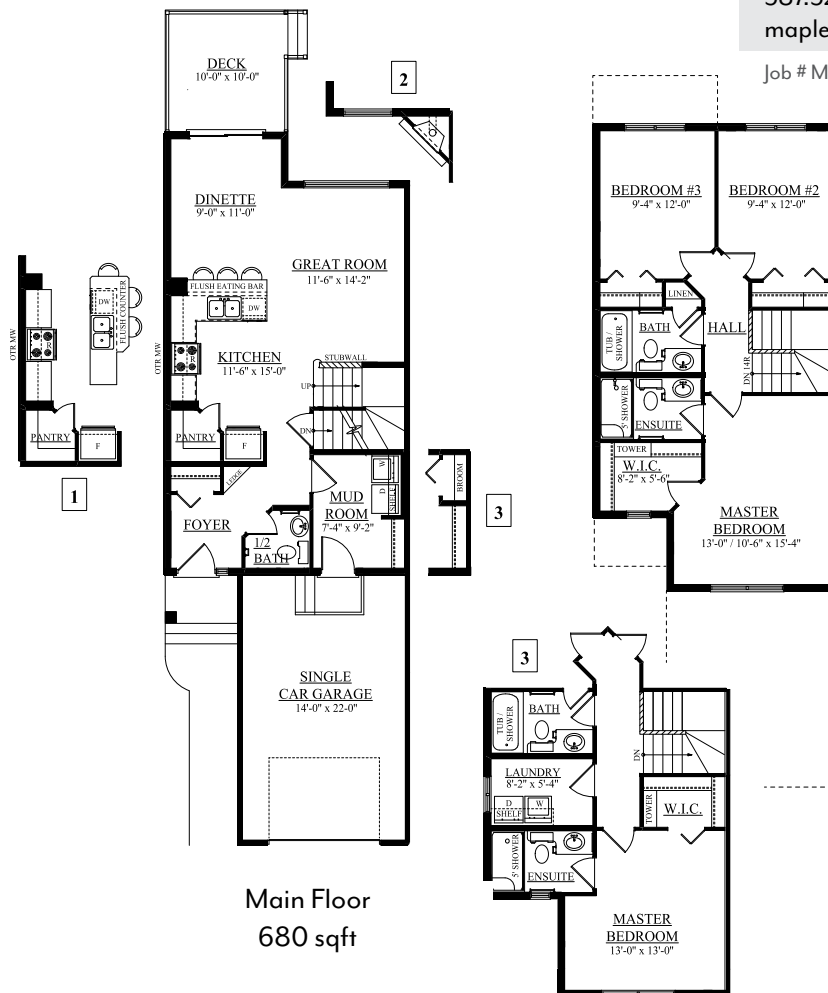
Maple Crest Showhome

4403 + 4407-6 St. NW, Edmonton, AB.

587.521.7744

maplecrestsales@bedrockhomes.ca

Job # MPC-0-033824 Lot 95, Block 11, Plan 152-3661



Main Floor
680 sqft

Second Floor
672 sqft

bedrockhomes.ca

VISIT US AT ANY OF OUR SHOWHOMES!

Monday - Thursday 3-8pm, Weekends & Holidays 12-5PM

