

Flora B at 7023 181 Ave NW

Get Cash Back

BED	BATH	SQ FT	HOME STYLE
3+	2.5	1592	LANED HOME



QUICK POSSESSION

BLOCK:	29	LOT:	24
--------	----	------	----

STAGE:	1	JOB:	CSA-0-035560
--------	---	------	--------------

COMMUNITY



SHOWHOME ADDRESS
18004 - 70th Street NW

SHOWHOME HOURS	Monday - Thursday from 3 - 8PM Weekend and Holidays from 12 - 5PM
----------------	---

CONTACT	Mohammad Ghounash 587-570-5471
---------	--------------------------------------

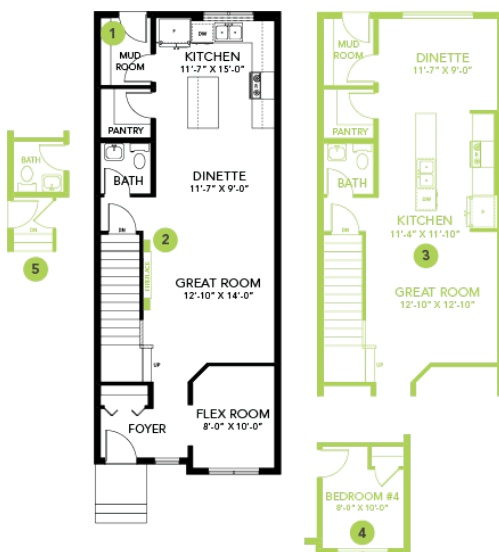
Model Features

- Relax and take a deep breath in this roomy, open concept 3 bedroom (and main floor den), 2.5 bath laned home.
- Dressed in attractive vinyl plank flooring throughout the main floor and advanced wear and stain protection carpet on the 2nd floor.

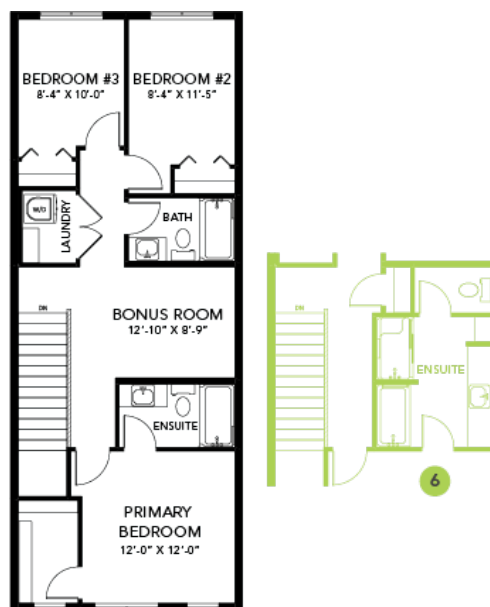
- Every Bedrock Home comes complete with a modern smart home technology system (Smart Home Hub), Ecobee thermostat, video doorbell & Weiser Halo Wi-Fi Smart keyless lock with touch screen.
- 50" Linear Ortech LED electric fireplace complete with media conduit and power above to mount a TV with no wires visible.
- This home says elegance with its airy, open to above stairwell that leads to the second floor where you will find a spacious bonus room, 3 bedrooms, a laundry room, and main bathroom.
- Need a tenant to help with the mortgage? This home comes prepped for future basement suite development with a side entrance and 9' ceiling.
- This corner kitchen will awaken the chef in you with it's long island topped with elegant quartz and undermount sink, 41" cabinets, subway tile backsplash and a large walk in pantry.
- The luxury of having your laundry machines on the second floor means no more running up and down the stairs - you can leave that for the gym!
- This home has a complete appliance package that includes: Stainless Steel kitchen appliances including a 28 cu. Ft. French door fridge with bottom pull out freezer and ice machine, a 5 burner range, an OTR microwave and a built-in dishwasher.
- Relax and melt the stress of the day away in your primary bedroom 3-pc ensuite with contemporary quartz countertop, undermount sink and 5' standing shower.
- Painted basement floor and the removable 5' x 2' dual slider basement windows are wide enough to fit drywall through for future basement development.
- Energy efficient features include triple pane, Low-E, argon gas filled, Energy Star rated windows, heat recovery ventilator, 96.5% efficient and direct vented furnace, 80gal hot water tank and Bedrock's 'Hotbox' system.
- Quartz countertops with under mount sinks in the kitchen and bathrooms.

Floor Plans

MAIN FLOOR



SECOND FLOOR



LEGAL BASEMENT SUITE

