

Flora H at 3668 5 Ave SW

BED	BATH	SQ FT	HOME STYLE
4	2.5	1592	LANED HOME



AVAILABLE

BLOCK: 14

STAGE: 32

LOT: 46

JOB: CHH0035731

COMMUNITY



SHOWHOME ADDRESS

Single Family Home with Front Attached Garage
328 – 40 Street SW

Single Family Home with Rear Detached Garage
268 Charlesworth Drive SW

SHOWHOME HOURS

Monday - Thursday from 3 - 8PM

Weekend and Holidays from 12 - 5PM

CONTACT

Brian Tate
587.521.5869

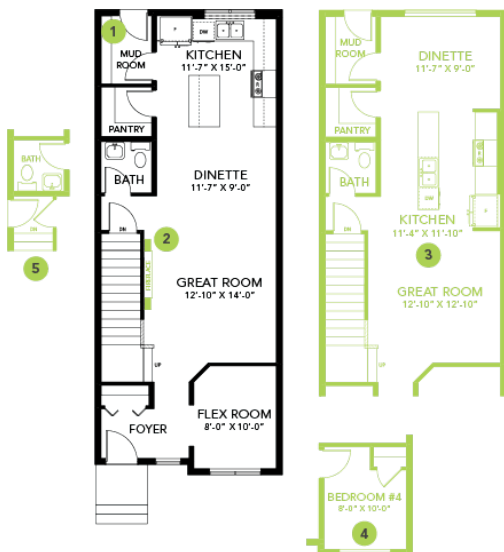
Model Features

- A very spacious house with an open concept main floor.
- Built with a main floor bedroom, spacious great room, dinette, and L-shaped kitchen at the back of the home with a corner pantry, and 41" soft close upper cabinets.

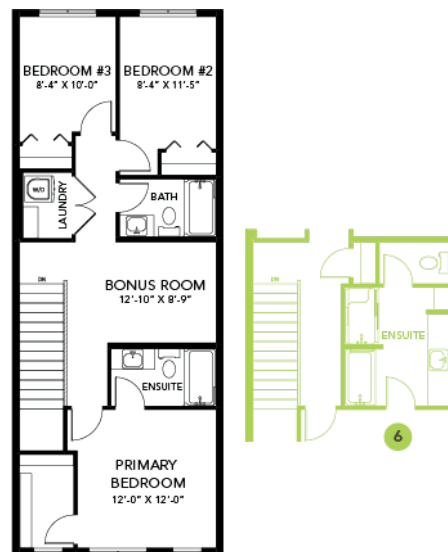
- Every Bedrock Home comes complete with a modern smart home technology system (Smart Home Hub), Ecobee thermostat, Video doorbell & Weiser Halo Wi-Fi Smart keyless lock with touch screen.
- The main floor and the basement ceilings are upgraded to 9'!
- Cozy up by the 50" electric hot and cold fireplace in the great room.
- Spindle railing on the stairs and upper hall creates an open feel from main floor to upper level.
- Built with a 3-piece primary ensuite with upgraded walk-in shower.
- Double compartment, stainless steel undermount kitchen sink, complete with a chrome finish faucet with pull down sprayer and 1.5gpm aerator.
- This Bedrock home comes complete with an appliance package that includes: Stainless Steel kitchen appliances including a 28 cu. Ft. French door fridge with bottom pull out freezer and ice machine, a 5 burner range, an OTR microwave and a built-in dishwasher.
- Energy efficient features include dual pane, Low-E, argon gas filled, Energy Star rated windows, heat recovery ventilator, 96.5% efficient and direct vented furnace, 80gal hot water tank and Bedrock's "Hotbox" system.
- Quartz counters in the kitchen and all bathrooms.
- Luxury Vinyl Plank flooring throughout the main floor and all "wet" areas.
- Advanced wear and stain protection carpet w/ 35 oz. weight and 8 lbs. under pad.
- Basement windows are wide enough to fit drywall through for future basement development.
- Includes community address plaque.
- All ductwork is cleaned prior to moving in.

Floor Plans

MAIN FLOOR



SECOND FLOOR



LEGAL BASEMENT SUITE

