

Priya B at 19 Memorial Parkway

BED BATH SQ FT HOME STYLE
3+ 2.5+ 2218 FRONT ATTACHED GARAGE HOME

GARAGE TYPE
DOUBLE ATTACHED



AVAILABLE

BLOCK: 9

STAGE: 1

LOT: 33

JOB: LBY-0-035683

COMMUNITY



SHOWHOME
ADDRESS

Single Family
Home
2 Legacy Road

SHOWHOME
HOURS

Monday - Thursday
from 3 - 8PM
Weekend and
Holidays
from 12 - 5PM

CONTACT

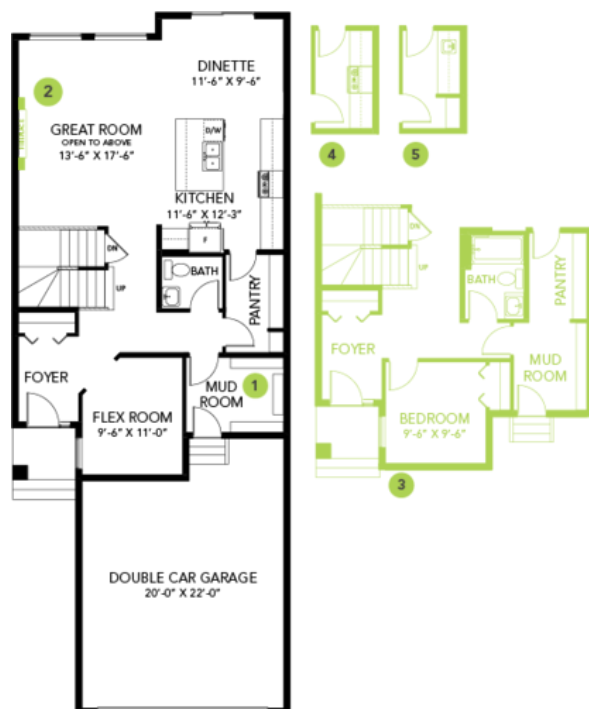
Sherri Heinrich
403.814.1005

Model Features

- Situated on a walk-out lot backing onto green space.
- Open to below floorplan.
- The main floor features a spacious great room, dinette, and central kitchen with a walk-through pantry, and 41" soft close upper cabinets.
- Luxury quartz countertops throughout.
- Enjoy your modern smart home technology system.
- Spindle railing on the main and second floor to add to the open feel.
- 50" Linear Ortech LED electric fireplace.
- Elegant and spacious 5-piece primary ensuite with upgraded tiled stand-up shower, dual sinks and a soaker tub.
- Sliding barn door added to the primary bedroom walk-in closet.
- Luxury Vinyl Plank flooring throughout the main floor and all "wet" areas.
- The large mudroom features a beautiful built-in bench complete with shelves and hooks for extra storage.
- Located in the beautiful growing community of Liberty Landing; Scenic walking trails, green spaces and a playground creates the perfect environment for any family.
- Living in Liberty landing, your yearly property taxes are lower than other communities. Over your 25-year mortgage, you will be saving over \$33,000 just by living in this amenity-focused community!

Floor Plans

MAIN FLOOR



SECOND FLOOR

