

# Elena P at 15 Amblecote Common

Get Cash Back

| BED | BATH | SQ FT | HOME STYLE                 |
|-----|------|-------|----------------------------|
| 3   | 2.5  | 2088  | FRONT ATTACHED GARAGE HOME |

GARAGE TYPE

DOUBLE ATTACHED



QUICK POSSESSION

COMMUNITY



SHOWHOME ADDRESS

3 Ashbury Crescent

SHOWHOME HOURS

Monday - Thursday  
from 3 - 8PM  
Weekend and  
Holidays  
from 12 - 5PM

CONTACT

Mike Marsh  
587.802.1334

|        |    |      |              |
|--------|----|------|--------------|
| BLOCK: | 30 | LOT: | 14           |
| STAGE: | 12 | JOB: | JSP-0-035481 |

## Model Features

- Side Entry
- Steps from Park and running trails
- Open concept on the main floor with 3 Bedrooms, 2.5 bathrooms and large central bonus room upstairs

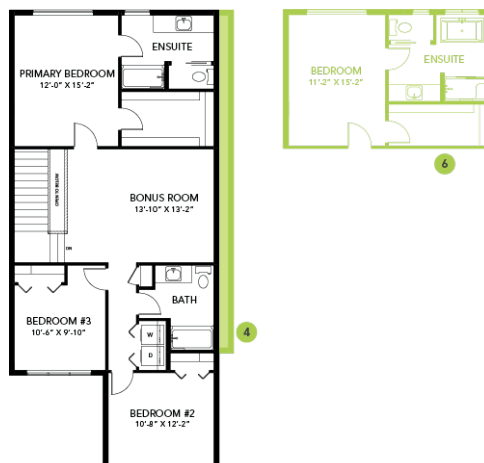
- 41" Kitchen upper cabinets
- 20x22 Attached double car garage
- 9' Ceilings on the main floor
- 6-piece Samsung Stainless Steel Appliances with white high efficiency front load washer/dryer
- Upgraded kitchen backsplash
- Large central island
- Upgraded Siding to a premium
- Electric Fireplace in great room
- 4-Piece ensuite layout with dual sinks in ensuite
- Paint Grade railing with straight metal spindles
- Luxury Vinyl plank throughout
- Quartz throughout
- Smart Home package
- Upstairs laundry
- 9' basement foundation walls
- LED pot lights throughout
- Triple pane, Low-E argon filled Energy Star rated windows
- Heat recovery ventilator
- Over \$22K in included designer options.

## Floor Plans

MAIN FLOOR



SECOND FLOOR



LEGAL BASEMENT SUITE

