

Seville H

1980 SQ FT

45 Memorial Parkway



- 3 beds, 2.5 baths
- Open concept living/dining
- Beautiful sunset view
- Backs onto peaceful green space
- Gorgeous and modern cabinets and granite countertops
- Beautiful stainless steel appliances
- Stunning Showhome
- Front facing bright and spacious bonus room
- Upstairs laundry
- Lots of basement development opportunity
- Spacious rooms, and master bedroom ensuite
- Triple pane low E Argon filled energy star windows
- Heat recovery ventilator, high efficiency furnace and hot water tank

Liberty Landing Showhome

45 Memorial Parkway, Liberty Landing
in Gasoline Alley
587.272.0933
libertylanding@bedrockhomes.ca

Job # LBY-0-033847 Lot 20, Block 9, Plan 1723061

Notes:

bedrockhomes.ca

VISIT US AT ANY OF OUR SHOWHOMES!

Monday - Thursday 3-8pm, Weekends & Holidays 12-5PM



Seville H

1980 SQ FT

45 Memorial Parkway

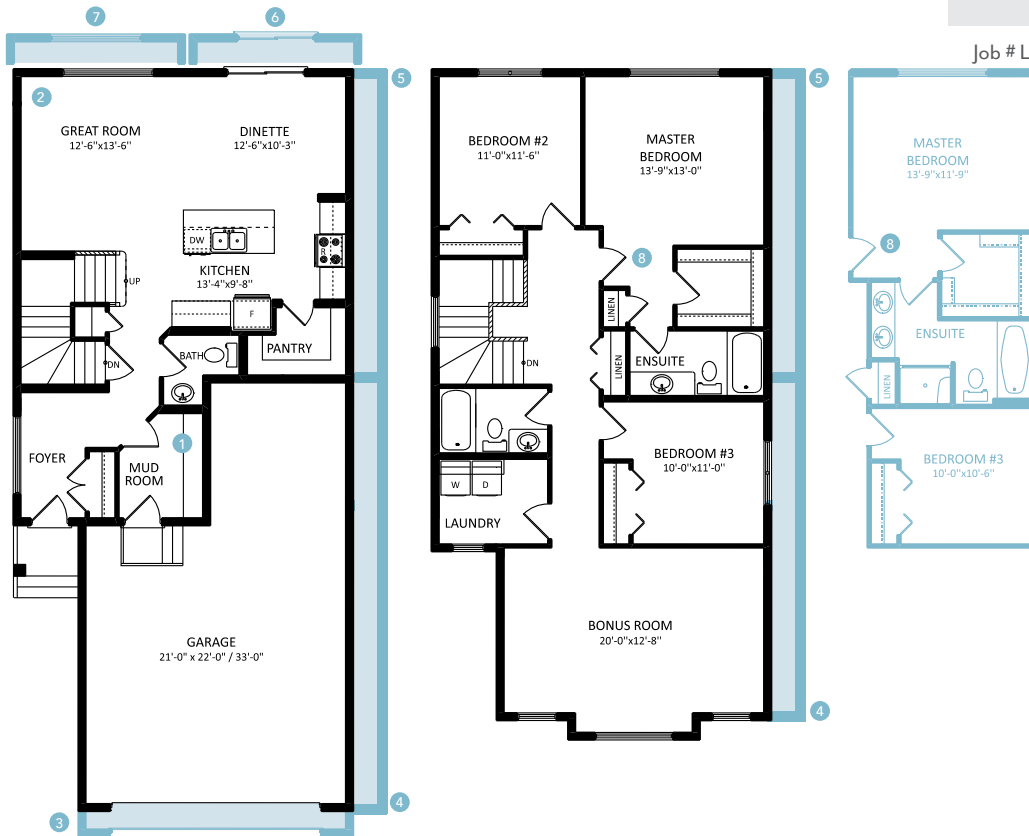


Main Floor
789 sqft

Second Floor
1191 sqft

Liberty Landing Showhome
45 Memorial Parkway, Liberty Landing
in Gasoline Alley
587.272.0933
libertylanding@bedrockhomes.ca

Job # LBY-0-033847 Lot 20, Block 9, Plan 1723061



bedrockhomes.ca

VISIT US AT ANY OF OUR SHOWHOMES!

Monday - Thursday 3-8pm, Weekends & Holidays 12-5PM

