

**Dylan Oakley**  
1574 SQ FT  
2440 Kelley Circle SW



- 3 Bedrooms, 2.5 bath with loft
- Luxury Vinyl Plank floors in Divine Quest Chasing Ice color
- 2018 Emerge Samsung Appliance Package Included
- Quartz counters all throughout in Hanstone Uptown Grey
- Gem Cabinets in Monaco Henna Thermofoil with Horizontal Grain color
- 1 bank of pot and pan drawer
- Linear Electric Fireplace
- Upgraded stub wall to railing in Snowbound color with square metal spindles on main floor
- 2nd floor laundry room
- Triple Pane Low E Argon filled Energy Star rated windows
- Heat Recovery Ventilator, high efficiency furnace and hot water tank
- 370.42 m2 pie lot with East-facing backyard

**One at Keswick Showhome**

2115 Koshal Way, Edmonton  
587.521.6582  
oneatkeswick@bedrockhomes.ca

Job # KWK 0-034264 Lot 21, Block 12, Plan 172-3548

Notes:

---

---

---

---

---

---

**bedrockhomes.ca**

VISIT US AT ANY OF OUR SHOWHOMES!  
Monday - Thursday 3-8pm, Weekends & Holidays 12-5PM

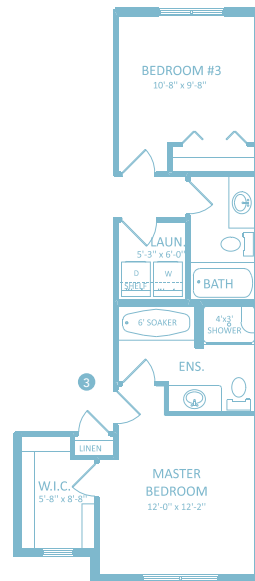
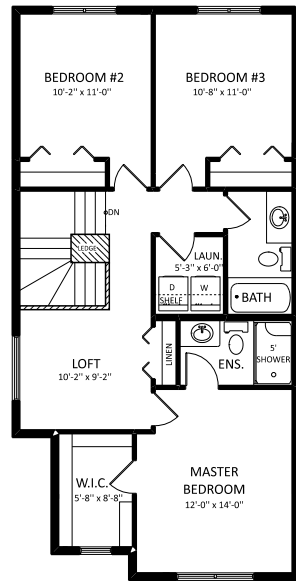
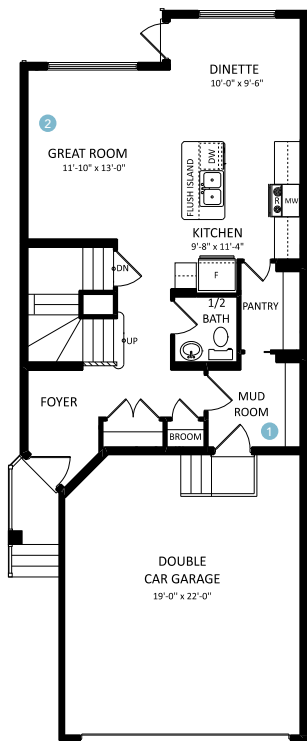


**Dylan Oakley**  
 1574 SQ FT  
 2440 Kelley Circle SW



**One at Keswick Showhome**  
 2115 Koshal Way, Edmonton  
 587.521.6582  
 oneatkeswick@bedrockhomes.ca

Job # KWK 0-034264 Lot 21, Block 12, Plan 172-3548



[bedrockhomes.ca](http://bedrockhomes.ca)

VISIT US AT ANY OF OUR SHOWHOMES!  
 Monday - Thursday 3-8pm, Weekends & Holidays 12-5PM

