

Abbey (Taurus)

1571 SQ FT

2880 Koshal Crescent SW



- 2 storey, 3 bedroom home with den
- 9' main floor and 9' foundation
- Quartz countertops in kitchen
- Large kitchen island
- Upgraded Samsung stainless appliance package including 28 cu ft fridge, slide in range, OTR hoodfan, and built in dishwasher
- Samsung 4.8 c.f. front load washer and 7.8 c.f. dryer with steam
- Laminate in great room, kitchen, dinette, foyer and den
- Tile in rear entry, main bath and ensuite
- Pearl white Hunter Douglas 1" aluminum blind package, with dustshield treatment
- 19' x 22' garage
- 35 year shingles
- Triple pane low E argon filled Energy Star rated windows
- 301.7 sq m lot with south backyard
- Sage siding with black trim, traditional red and evening blue accents
- Alderwood stacked stone
- Superior silence shared wall system- no shared studs or floor joists
- Front & rear landscaping
- 11' x 10' rear deck with BBQ gas line
- Moving service
- Essentials I finishing package

One at Keswick Showhome

2910 Kostash Drive SW, Edmonton AB.

780.761.2211

oneatkeswicksales@bedrockhomes.ca

Job # KWK-0-033689 Lot 39 Block 10, Plan 152-3091

Notes:

bedrockhomes.ca

VISIT US AT ANY OF OUR SHOWHOMES!

Monday - Thursday 3-8pm, Weekends & Holidays 12-5PM



Abbey (Taurus)

1571 SQ FT

2880 Koshal Crescent SW



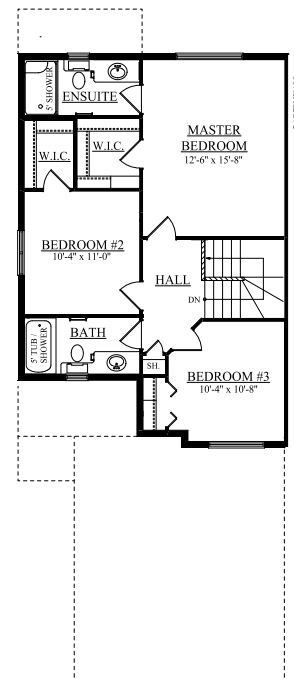
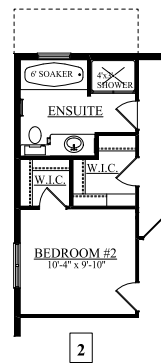
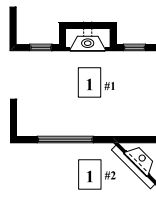
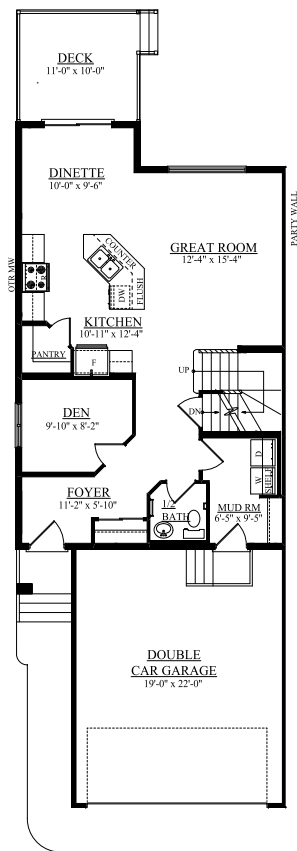
One at Keswick Showhome

2910 Kostash Drive SW, Edmonton AB.

780.761.2211

oneatkeswicksales@bedrockhomes.ca

Job # KWK-0-033689 Lot 39 Block 10, Plan 152-3091



bedrockhomes.ca

VISIT US AT ANY OF OUR SHOWHOMES!

Monday - Thursday 3-8pm, Weekends & Holidays 12-5PM

