

Seville T
1990 SQ FT
4107 5 Ave SW



- 3 Bedroom, 2.5 bath home with a bonus room
- 9' Ceilings on Main Floor
- Samsung Appliance Package Included
- Upgraded hardware to black on door levers, hinges, and doorknobs
- Linear Electric Fireplace
- 4 Piece ensuite to Master Bedroom
- Upgraded paint grade railing with metal spindles on first and second floor
- Quartz countertops in the kitchen and second floor bathrooms
- Upgraded pantry door to frosted glass
- Bonus room
- Large second floor laundry

Hills of Charlesworth Showhome
714 Charlesworth Way SW, Edmonton
587.521.5869
hillssofcharlesworth@bedrockhomes.ca

Job # CHH-0-034283 Lot 95, Block 1, Plan 172-3655

Notes:

bedrockhomes.ca

VISIT US AT ANY OF OUR SHOWHOMES!
Monday - Thursday 3-8pm, Weekends & Holidays 12-5PM

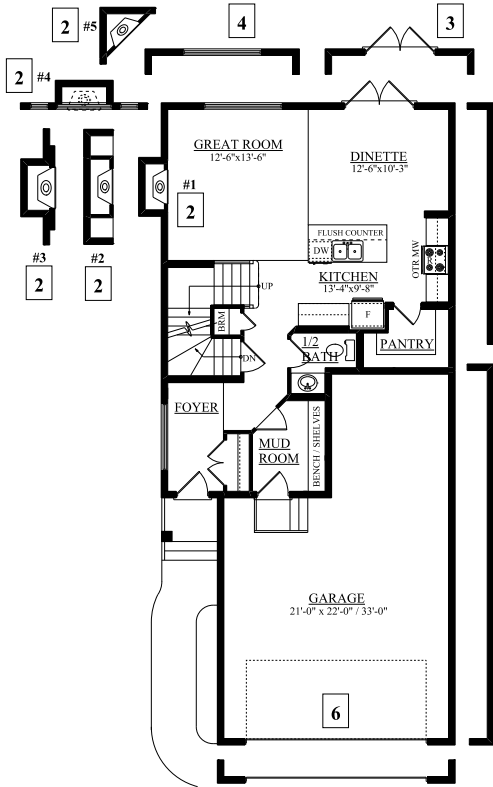


Seville T
 1990 SQ FT
 4107 5 Ave SW

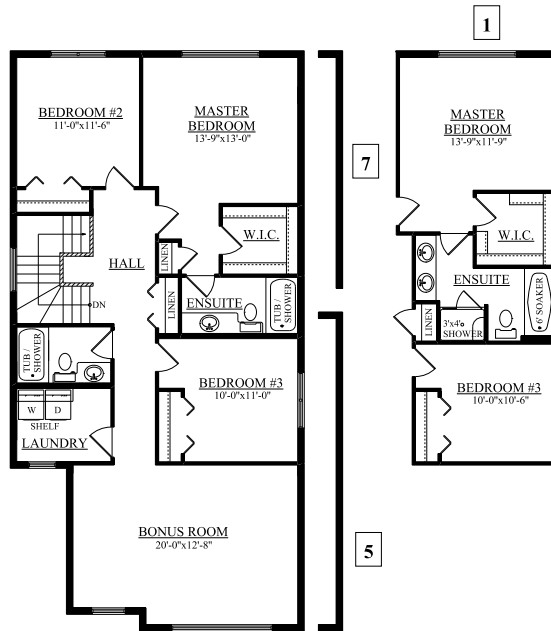


Hills of Charlesworth Showhome
 714 Charlesworth Way SW, Edmonton
 587.521.5869
hillscharlesworth@bedrockhomes.ca

Job # CHH-0-034283 Lot 95, Block 1, Plan 172-3655



Main Floor
 786 sqft



Second Floor
 1201 sqft

bedrockhomes.ca

VISIT US AT ANY OF OUR SHOWHOMES!
 Monday - Thursday 3-8pm, Weekends & Holidays 12-5PM

