



THE HILLS AT CHARLESWORTH SHOWHOME

714 Charlesworth Way SW, Edmonton
587.521.5869
hillsatcharlesworth@bedrockhomes.ca

Job # CHH-0-033723
Lot 10, Block 1, Plan 152-2167

DETAILS

- 3 bedrooms, 2.5 bath with second floor laundry
- 8' ceiling on main floor with laminate flooring throughout main floor
- Quartz countertop in the kitchen with undermount sinks
- Soffit plug for Christmas lights included
- Hills address plaque
- Kitchen has Samsung stainless steel appliance package with white front load washer and dryer
- Full air conditioning unit
- Full front and back landscaping
- Low E argon filled Energy Star rated windows
- Heat recovery ventilator, high efficiency furnace and hot water tank
- Full rear deck completed
- Full showhome security system
- Premium siding on the outside
- Additional 2' added to the width of garage and bedroom #2
- Cantilevered gas fireplace in great room with additional glass media kit
- Upgraded paint grade railing with straight metal spindles on main and second floor
- Upgraded 4 piece ensuite to master bedroom
- Window coverings and bedding included



BEDROCK
HOMES

GREYSON N

1425 SQ FT
708 Charlesworth Way SW

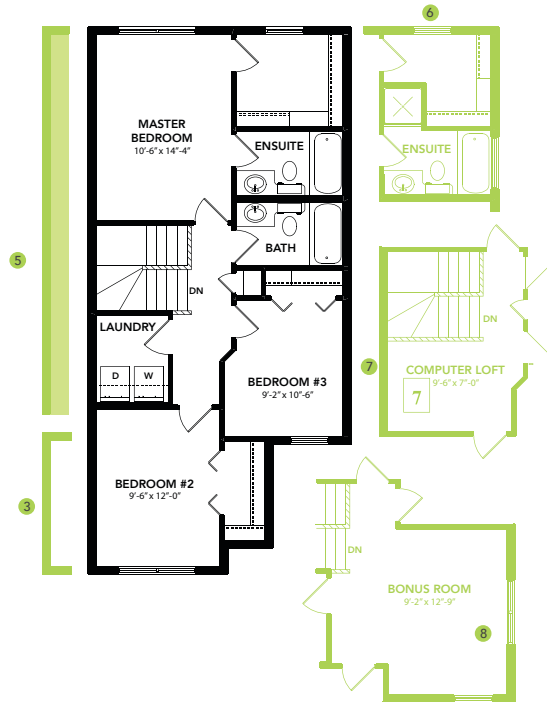
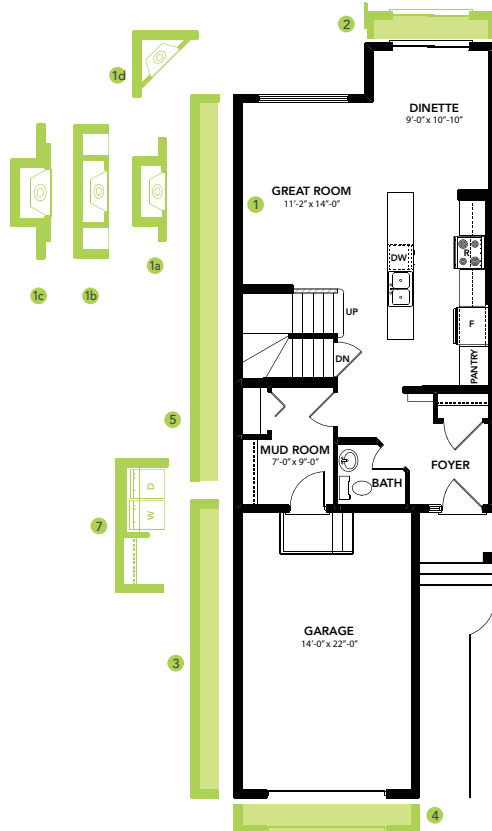


THE HILLS AT CHARLESWORTH SHOWHOME

714 Charlesworth Way SW, Edmonton
587.521.5869

hillsatcharlesworth@bedrockhomes.ca

Job # CHH-0-033723
Lot 10, Block 1, Plan 152-2167



GREYSON N